



Cultural Site Sheet

Cultural site name	Roman Theatre
Type of site	Archaeological area
Address	Via F. Ferrucci
City	Volterra (PI)
Contacts	+ 39 0588 86347 email: prenotazionemusei@comune.volterra.pi.it
Website	http://www.museivaldicecina.it/it/teatro_romano_volterra.php
WCAG 2.1 compliant accessible website	YES

TESTED BY: [Handy Superabile Social Promotion Association](#) in summer 2024

Please note The following information refers to the date of verification shown at the bottom of each sheet. **The Association** is not responsible for any significant changes made by the property after the visit.

Summary

Cultural Site Sheet.....	1
Description.....	2
Arrival at the property.....	3
Private/public parking.....	3
Pathway from the car park to the entrance.....	3
Reception.....	4
Itineraries.....	5
Services.....	7
Additional elements.....	7
Toilets for guests with reduced mobility.....	7
Medical practices/healthcare facilities.....	9

Project carried out with the contribution of the



Presidenza del
Consiglio dei Ministri
Ministro per la disabilità



Description

The Roman Theatre of Volterra is located in the archaeological area of Vallebuona, near the medieval walls. Excavations carried out since 1950 have made it possible to date the construction of the theatre to around the end of the first century BC., and have brought to light a part of the original staircases built using the natural slope, in a style similar to that of Greek theaters. To date, it is possible to observe 19 rows of seats in the central and lower sectors; Due to its size, the entire theater must have held about 3500 spectators. The Roman Theater of Volterra was abandoned at the end of the third century AD, and a thermal facility was inserted in the area of the scene.

General information




Opening and closing period	Open every day. For the holidays of 9-10 April (Easter and Easter Monday), 25 April, 1 May, 2 June and 15 August regular opening Opening hours may be subject to change. It is advisable to always contact the property.
Times	From 10.00 a.m. to 5.30 p.m. from 11 March to 5 November
Ticket cost	10 Euro
Reductions	Children 6 16 years, over 60, Coop members 8 Euro Groups min 10 pax 6 Euro Guided tour supplement: 2 Euro
Online purchase	YES
Pet access	YES





Arrival at the property

Private/public parking



Presence of private parking	NO
Public parking nearby	YES Vallebona car park in Viale Porretti and one in front of the entrance to the archaeological site
Type of flooring in the public car park	asphalt
Presence of parking space reserved for people with disabilities	YES 1 for every 50 spaces at the Vallebona car park. A parking space is available in Piazza della Pescheria
	
	

Pathway from the car park to the entrance

The property can be reached from the car park	flat
Distance from parking to entrance	From 2 meters to 300 meters






There are indicators and tactile maps	NO
There is an accessible entrance	YES main entrance
How to access the site	<input checked="" type="checkbox"/> flat
Useful width of door/entrance gate	Above 90 cm
Type of door	with door that can be opened outwards
Type of handle	lever
	

Reception

How to access	flat
Priority access for visitors with disabilities	YES
Orientation signs	NO
Type of information material	<input checked="" type="checkbox"/> Audio guides <input checked="" type="checkbox"/> QR code
A cloakroom accessible to visitors with motor disabilities is available	NO
Multilingual staff	YES
The staff followed a training course on welcoming people with different disabilities	NO
Presence of sign language interpreters	NO
Reception desk height	bench over 100 cm





The following aids are available for visitors with disabilities	NO
Notes	
	

Itineraries

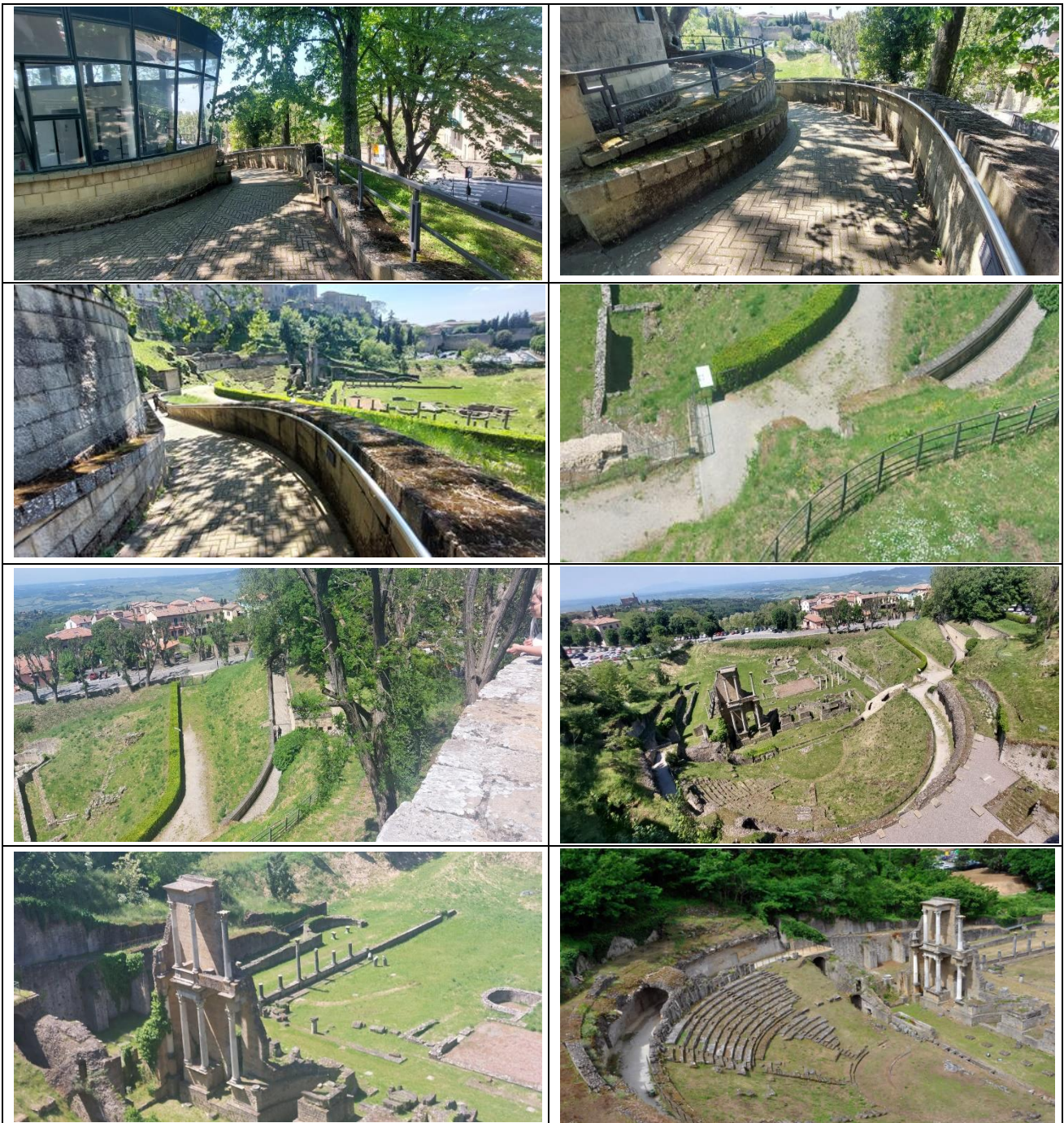
Presence of maps	NO
Touch indicators and visual-touch maps	NO
Presence of didactic panels	NO
Audio guide	YES
Touch Models	NO
Multimedia workstations accessible from a seated position	NO
Routes dedicated to children	NO
Stopping points	YES
Route spread over several floors	YES
Access to the starting point of the route	flat to reception
How to access the archaeological area	<input checked="" type="checkbox"/> via ramp single length 40 cm wide, 2 meters, incline 9 %, handrail on the right
Usable width of door/entrance gate/corridor	Above 90 cm
Eventual notes	The theater is partially accessible for guests with limited mobility



Project promoted by



Regione Toscana



Project carried out with the contribution of the



**Presidenza del
Consiglio dei Ministri**
Ministro per la disabilità



Services




Additional elements

Guided tours for groups	YES
Guided tours for individuals	YES
Activities for children and families	See the website
Guided tours with trained staff	Not detected
Accessible bookshop	Not present

Toilets for guests with reduced mobility

Number of accessible toilets for guests with reduced mobility	There are no toilets inside that are accessible to guests with reduced mobility
Distance Accessible public toilet (extra charge)	300 meters
Bathroom location	Via delle Prigioni 3
How to access the premises	<input checked="" type="checkbox"/> via ramp single length 140 cm, width 100 cm, slope superior to 8%
Usable width of the entrance door	Above 90 cm
Toilet height	52 cm
Toilet seat with open front tooth	YES
Support handles	to the right of the toilet
Flexible shower on the side of the toilet	YES
Free space on the sides of the toilet	left 50 cm right 46 cm frontal Above 90 cm
Electric doorbell/telephone	NO



Washbasin with space underneath for wheelchair approach	65 cm
Height from the ground lower edge mirror	not sufficient for use by a person in a wheelchair
Baby changing table	YES
Eventual notes	Floor level shower with seat and grab bars
	
	



Project promoted by



Regione Toscana

Medical practices/healthcare facilities

Hospitals near the property	S. Maria Maddalena Volterra Hospital, Borgo San Lazzero 5, Tel +39 0588 91911
Other healthcare facilities	Azienda UsI Volterra Borgo San Lazzero 5, Tel +39 0588 91822 Pronto soccorso at Ospedale Tel +39 0588 91701 Dialysis service on holiday Tel +39 0588 91782 at the Hospital

TESTED BY: [Handy Superabile Social Promotion Association](#) in 2024

Project carried out with the contribution of the



Presidenza del
Consiglio dei Ministri
Ministro per la disabilità